



The suitable welding shoe for every application

FUSION 2 / 3 / 3C / WELDPLAST S2



Seam geometries



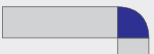
Fillet weld seam



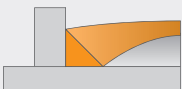
V-seam / X-seam



Overlap seam



Corner outside seam



Corner seam



WELDPLAST S2

FUSION 2

FUSION 3

FUSION 3C

Leister Integrated Air System (IA): The air guidance is integrated into the welding shoe. This enables the turning of the shoe 360° into every desired welding and seam position.



K-5/6 IA
Fillet weld, 5/6 mm
Article No.: 145.943



K-8/10 IA
Fillet weld, 8/10 mm
Article No.: 145.944



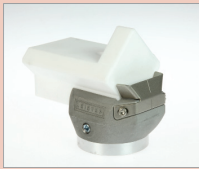
K-15 IA
Fillet weld, 15 mm
Article No.: 145.812



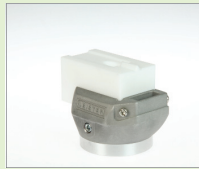
K-20 IA
Fillet weld, 20 mm
Article No.: 145.940



K-25 IA
Fillet weld, 25 mm
Article No.: 145.816



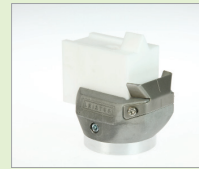
K-30 IA
Fillet weld, 30 mm
Article No.: 145.817



V-5/6 IA
V-seam, 5/6 mm
Article No.: 145.912



V-8/10 IA
V-seam, 8/10 mm
Article No.: 145.915



V-12 IA
V-seam, 12 mm
Article No.: 145.907



V-15 IA
V-seam, 15 mm
Article No.: 145.903



UBL-25 IA
Overlap seam, 25 mm
Article No.: 145.896



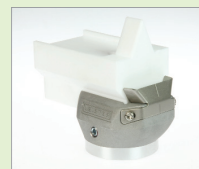
UBL-30 IA
Overlap seam, 30 mm
Article No.: 145.947



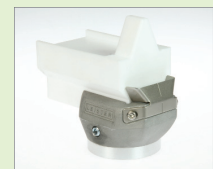
UBL-35 IA
Overlap seam, 35 mm
Article No.: 145.897



V-20 IA
V-seam, 20 mm
Article No.: 145.909



V-25 IA
V-seam, 25 mm
Article No.: 145.916



V-30 IA
V-seam, 30 mm
Article No.: 145.905



CO-8 IA
Corner outside, 8 mm
Article No.: 146.643



CO-10 IA
Corner outside, 10 mm
Article No.: 146.645



CO-12 IA
Corner outside, 12 mm
Article No.: 146.649



CO-15 IA
Corner outside, 15 mm
Article No.: 146.651



CL-14 IA
Corner seam, 14 mm
Article No.: 145.811



CS-20 IA
Corner seam, 20 mm
Article No.: 145.488



45° Angled adapter WP S2
Article No.: 139.460



90° Angled adapter WP S2
Article No.: 139.461



Welding rod de-reeler for 1 reel
Article No.: 144.095



Pre-heat reflector
Article No.: 136.231