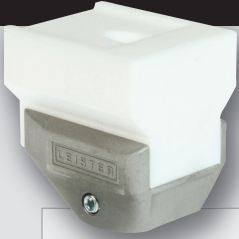


# LEISTER

## The suitable welding shoe for every application

### WELDPLAST S2 PVC/S4/S6



#### Seam geometries



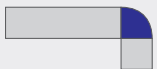
Fillet weld seam



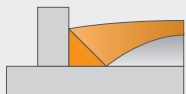
V-seam / X-seam



Overlap seam



Corner outside seam



Corner seam



WELDPLAST S2 PVC



WELDPLAST S4



WELDPLAST S6

#### Leister External Air System (EA)

				
<b>K-5/6 EA</b> Fillet weld, 5 /6 mm Article No.: 146.235	<b>K-8/10 EA</b> Fillet weld, 8 /10 mm Article No.: 146.236	<b>K-15 EA</b> Fillet weld, 15 mm Article No.: 146.231	<b>K-20 EA</b> Fillet weld, 20 mm Article No.: 146.232	<b>K-25 EA</b> Fillet weld, 25 mm Article No.: 146.233
				
<b>K-30 EA</b> Fillet weld, 30 mm Article No.: 146.234	<b>V-5/6 EA</b> V-seam, 5 /6 mm Article No.: 146.248	<b>V-8/10 EA</b> V-seam, 8 /10 mm Article No.: 146.249	<b>V-12 EA</b> V-seam, 12 mm Article No.: 146.243	<b>V-15 EA</b> V-seam, 15 mm Article No.: 146.244
				
<b>UBL-25 EA</b> Overlap seam, 25 mm Article No.: 146.241	<b>UBL-35 EA</b> Overlap seam, 35 mm Article No.: 146.242	<b>UBL-40 EA</b> Overlap seam, 40 mm Article No.: 145.899	<b>V-20 EA</b> V-seam, 20 mm Article No.: 146.245	<b>V-25 EA</b> V-seam, 25 mm Article No.: 146.246
				
<b>V-30 EA</b> V-seam, 30 mm Article No.: 146.247	<b>CO-8 EA</b> Corner outside, 8 mm Article No.: 146.642	<b>CO-10 EA</b> Corner outside, 10 mm Article No.: 146.644	<b>CO-12 EA</b> Corner outside, 12 mm Article No.: 146.646	<b>CO-15 EA</b> Corner outside, 15 mm Article No.: 146.652
				
<b>CL-14 EA</b> Corner seam, Ø 14 mm Article No.: 146.230	<b>CS-20 EA</b> Corner seam, Ø 20 mm Article No.: 146.218	<b>45° Angled adapter S4 / S6</b> WP S4 Article No.: 144.904 WP S6 Article No.: 144.905	<b>90° Angled adapter S4 / S6</b> WP S4 Article No.: 145.704 WP S6 Article No.: 145.705	<b>Welding rod de-reeler for 1 reel</b> Article No.: 144.095
	<b>Pre-heat reflector for 1 reel</b> Article No.: 136.231			